

1995 Boys' Sweet Sixteen Action

first round

WAYNE COUNTY

VS.

SCOTT COUNTY

March 15, 1995

**Rupp Arena
Lexington, Kentucky**

OFFICIAL STATISTICS BOOKLET

OFFICIAL NFSHSA BASKETBALL BOX SCORE: *** FINAL *** Date: 03-15-95 Site: BOY'S SWEET 16, LEXINGTON

VISITORS (Last Name, First)

NO.	SCOTT COUNTY	Tot FG		3-POINT		FT	FTA	Rebounds			PF	TP	A	TO	BLK	S	TIME				
		FG	FGA	FG	FGA			OFF	DEF	TOT											
00	TALBERT, JOSH	3	11	0	0	3	4	6	7	13	3	9	2	3	0	0	26:02				
20	WOOD, JEREMY	2	12	1	7	4	6	3	1	4	2	9	2	1	0	3	30:55				
34	BERRY, SEAN	1	2	0	0	0	0	1	9	10	2	2	0	1	0	1	18:22				
24	JOHNSON, TONY	4	10	1	2	0	0	1	5	6	5	9	2	4	0	4	19:20				
10	RICHARDSON, MIKE	7	14	0	2	3	4	0	3	3	4	17	2	5	1	0	24:08				
32	WAGNER, BUDDY	3	3	0	0	0	0	1	0	1	0	6	0	0	1	0	13:38				
44	PULLIAM, BRAD	0	2	0	0	0	0	3	1	4	3	0	1	0	0	0	5:58				
14	PENN, BILLY RAY	3	6	1	2	1	2	1	0	1	1	8	0	1	0	1	17:53				
05	HUBBARD, RONNIE	0	1	0	0	0	0	1	0	1	2	0	0	1	0	1	2:39				
22	CENTERS, JASON	0	1	0	0	0	0	0	0	0	0	0	0	0	0	0	1:05				
TEAM REBOUNDS (INCLUDED IN TOTALS)								2	1	3											
TOTALS		23	62	3	13	11	16	19	27	46	22	60	9	16	2	10	160				
Percentages:		Game		FG		23/62		37.1%		3-PT.		3/13		23.1%		FT		11/16		68.8%	
Period 1						7/20		35.0%				1/5		20.0%				1/2		50.0%	
Period 2						7/17		41.2%				2/4		50.0%				0/0		0.0%	
Period 3						7/15		46.7%				0/2		0.0%				1/1		100.0%	
Period 4						2/10		20.0%				0/2		0.0%				9/13		69.2%	

HOME (Last Name, First)

NO.	WAYNE COUNTY	Tot FG		3-POINT		FT	FTA	Rebounds			PF	TP	A	TO	BLK	S	TIME				
		FG	FGA	FG	FGA			OFF	DEF	TOT											
21	PHILLIPS, DAVID	5	14	1	3	10	13	7	8	15	1	21	2	4	0	1	32:00				
32	GARNER, JASON	3	11	0	0	3	5	3	4	7	5	9	0	1	0	0	30:34				
33	KELSAY, JASON	1	3	0	0	0	0	2	5	7	4	2	0	3	2	0	30:34				
11	SHEARER, WILLIAM	5	15	0	5	5	8	1	2	3	3	15	2	8	0	4	32:00				
23	RAMSEY, RICHARD	2	8	1	5	1	1	1	2	3	3	6	1	0	1	1	21:42				
24	OWENS, TRENT	0	2	0	2	0	0	0	2	2	3	0	0	1	0	0	12:55				
35	GREGORY, JOSH	0	0	0	0	0	0	0	0	0	0	0	0	0	0	0	0:15				
TEAM REBOUNDS (INCLUDED IN TOTALS)								1	1	2											
TOTALS		16	53	2	15	19	27	15	24	39	19	53	5	17	3	6	160				
Percentages:		Game		FG		16/53		30.2%		3-PT.		2/15		13.3%		FT		19/27		70.4%	
Period 1						5/14		35.7%				2/6		33.3%				6/7		85.7%	
Period 2						4/12		33.3%				0/4		0.0%				4/6		66.7%	
Period 3						3/13		23.1%				0/2		0.0%				3/4		75.0%	
Period 4						4/14		28.6%				0/3		0.0%				6/10		60.0%	

OFFICIALS: Barry Barnes, Gerry Hilpp, Mike Ashurst-A
 Technicals: None

SCORE BY PERIODS					
SCOTT COUNTY	16	16	15	13	= 60
WAYNE COUNTY	18	12	9	14	= 53

Attendance: 17,125

COMMENTS: POINTS OFF TURNOVERS

SCOTT COUNTY 16 WAYNE COUNTY

13 SCOTT COUNTY SECOND CHANCE POINTS 13 WAYNE COUNTY

14

Produced by the KHSAA SWEET 16 Stat Crew with FINAL III - a Product of Stone Consulting (606)273-3941

SCOTT COUNTY "CARDINALS" vs WAYNE COUNTY "CARDINALS"
1st Half Play by Play

PAGE : 1

Tip off at 1:00 P.M on 03/15/95 at BOY'S SWEET 16, LEXINGTON
Produced by the KHSAA SWEET 16 Stat Crew with FINAL III
Final III is a product of STONE CONSULTING SERVICE (606)273-3941

Player	Team	WAYNE COUNTY	Time	Score	SCOTT COUNTY	Player	Team
PHILLIPS, DAVID, GARNER, JASON, KELSAY, JASON, SHEARER, WILLIAM, RAMSEY, RICHARD			TALBERT, JOSH, WOOD, JEREMY, BERRY, SEAN, JOHNSON, TONY, RICHARDSON, MIKE				
1-1	100%	1-2 50.0%	8 ft Left Side Turnaround by PHILLIPS, DAVID	1 7:20	*2-0		
1		1	Assist by SHEARER, WILLIAM	1 6:45			
1		1	Foul on GARNER, JASON	1 6:45	2-1*	TALBERT, JOSH, 2 Free Throws missed 1st made 2nd	1-2 50.0%
				1 6:27	2-3*	16 ft Left Angle Jump shot by RICHARDSON, MIKE	1-1 100%
				1 5:56	2-5*	Follow Layup by JOHNSON, TONY	1-1 100%
				1 5:49		Foul on JOHNSON, TONY	1 1
2-2	100%	2-2 100%	SHEARER, WILLIAM, 2 Free Throws made both	1 5:49	*4-5		
				1 5:44	4-8*	3 pt 23 ft Right Side Jump shot by JOHNSON, TONY	2-2 100%
						Assist by WOOD, JEREMY	1 1
1-4	25.0%	2-6 33.3%	11 ft Right Side Bank by RAMSEY, RICHARD	1 5:31	*6-8		
				1 5:31		Foul on TALBERT, JOSH	1 2
1-1	100%	3-3 100%	RAMSEY, RICHARD, 1 Free Throw made	1 5:31	*7-8		
				1 5:19	7-10*	6 ft Lane Jump shot by JOHNSON, TONY	3-3 100%
2-3	66.6%	3-8 37.5%	3 pt 22 ft Left Side Jump shot by PHILLIPS, DAVID	1 4:51	*10-10		4-7 57.1%
2		2	Assist by SHEARER, WILLIAM				
			REB: 3 A: 2 BLK: 0 TO: 1 PF: 1	1 4:44		REB: 5 A: 1 BLK: 0 TO: 1 PF: 2	
			S: 0 FT: 3-3 100% FG: 3-8 37.5%	TIME - 0 U T	SCOTT COUNTY No. 1	S: 1 FT: 1-2 50.0% FG: 4-7 57.1%	
			REB: 3 A: 2 BLK: 0 TO: 1 PF: 1	1 4:44		REB: 5 A: 1 BLK: 0 TO: 1 PF: 2	
			S: 0 FT: 3-3 100% FG: 3-8 37.5%	TIME - 0 U T	SCOTT COUNTY No. 2	S: 1 FT: 1-2 50.0% FG: 4-7 57.1%	
			REB: 3 A: 2 BLK: 0 TO: 1 PF: 1	1 4:44		REB: 5 A: 1 BLK: 0 TO: 1 PF: 2	
			S: 0 FT: 3-3 100% FG: 3-8 37.5%	TIME - 0 U T	SCOTT COUNTY No. 3	S: 1 FT: 1-2 50.0% FG: 4-7 57.1%	
1-1	100%	4-10 40.0%	Driving Layup by KELSAY, JASON	1 3:40	*12-10		
1		3	Assist by RAMSEY, RICHARD				
				1 3:21		Foul on BERRY, SEAN	1 3
				1 3:21		Sub In: WAGNER, BUDDY Out: BERRY, SEAN	
				1 3:21		Sub In: PULLIAM, BRAD Out: TALBERT, JOSH	
				1 3:21		Sub In: PENN, BILLY RAY Out: JOHNSON, TONY	
				1 3:13	12-12*	Follow Layup by WAGNER, BUDDY	1-1 100%
						Assist by RICHARDSON, MIKE	1 2
2-5	40.0%	5-12 41.6%	3 pt 21 ft Right Angle Jump shot by RAMSEY, RICHARD	1 2:58	*15-12		
1		4	Assist by PHILLIPS, DAVID				
				1 2:52		Player Control Foul on RICHARDSON, MIKE	1 4
				1 2:52		Sub In: HUBBARD, RONNIE Out: RICHARDSON, MIKE	
				1 2:12			
				1 2:07	15-14*	18 ft Left Side Jump shot by PENN, BILLY RAY	1-1 100%
				1 1:47	15-16*	4 ft Lane Turnaround by WAGNER, BUDDY	2-2 100%
						Assist by PULLIAM, BRAD	1 3
				1 1:39		Sub In: CENTERS, JASON Out: WOOD, JEREMY	
				1 1:32		Foul on PULLIAM, BRAD	1 5
1-2	50.0%	4-5 80.0%	PHILLIPS, DAVID, 2 Free Throws missed 1st made 2nd	1 1:32	*16-16		
				1 0:34		Foul on HUBBARD, RONNIE	1 6
4-4	100%	6-7 85.7%	SHEARER, WILLIAM, 2 Free Throws made both	1 0:34	*18-16		
				1 0:34		Subs In: RICHARDSON, MIKE, JOHNSON, TONY, BERRY, SEAN, TALBERT, JOSH, WOOD, JEREMY	
						Out: HUBBARD, RONNIE, PENN, BILLY RAY, CENTERS, JASON, WAGNER, BUDDY, PULLIAM, BRAD	

SCOTT COUNTY 'CARDINALS' vs WAYNE COUNTY 'CARDINALS'
1st Half Play by Play

PAGE : 2

Tip off at 1:00 P.M on 03/15/95 at BOY'S SWEET 16, LEXINGTON
Produced by the KHSAA SWEET 16 Stat Crew with FINAL III
Final III is a product of STONE CONSULTING SERVICE (606)273-3941

Player	Team	WAYNE COUNTY	Time	Score	SCOTT COUNTY	Player	Team	
PHILLIPS, DAVID, GARNER, JASON, KELSAY, JASON, SHEARER, WILLIAM, RAMSEY, RICHARD			TALBERT, JOSH, WOOD, JEREMY, BERRY, SEAN, JOHNSON, TONY, RICHARDSON, MIKE				Ball to CARDINALS	
1-3	33.3%	6-15 40.0%	4 ft Lane SHOT Off Fast Break by SHEARER, WILLIAM	2 7:48	18-18*	13 ft Left Side Jump shot by RICHARDSON, MIKE	2-3 66.6% 8-21 38.0%	
				2 7:42	*20-18			
				2 7:25	20-21*	3 pt 21 ft Left Side Jump shot by WOOD, JEREMY	1-5 20.0% 9-23 39.1%	
						Assist by TALBERT, JOSH	1 4	
				2 6:39		Sub In: WAGNER, BUDDY Out: BERRY, SEAN		
				2 6:07	20-23*	Follow Layup by TALBERT, JOSH	1-4 25.0% 10-25 40.0%	
				2 6:04				
		REB: 10 A: 4 BLK: 1 TO: 6 PF: 2				REB: 16 A: 4 BLK: 0 TO: 5 PF: 6		
		S: 0 FT: 6-7 85.7% FG: 6-17 35.2%	No. 1 WAYNE COUNTY	T I M E - O U T		S: 4 FT: 1-2 50.0% FG: 10-25 40.0%		
2-4	50.0%	7-18 38.8%	13 ft Left Angle Jump shot by SHEARER, WILLIAM	2 5:54	*22-23			
				2 5:12		Sub In: PENN, BILLY RAY Out: RICHARDSON, MIKE		
				2 4:55		Foul on JOHNSON, TONY	2 7	
3-4	75.0%	8-9 88.8%	PHILLIPS, DAVID, 2 Free Throws made both	2 4:55	*24-23			
			Sub In: OWENS, TRENT Out: RAMSEY, RICHARD	2 4:55				
				2 4:42	24-26*	3 pt 21 ft Right Side Jump shot by PENN, BILLY RAY	2-4 50.0% 11-29 37.9%	
						Assist by WOOD, JEREMY	2 5	
				2 4:27		Sub In: RICHARDSON, MIKE Out: JOHNSON, TONY		
				2 4:06		Foul on TALBERT, JOSH	2 8	
5-6	83.3%	10-11 90.9%	PHILLIPS, DAVID, 2 Free Throws made both	2 4:06	*26-26			
				2 3:53		Foul on RICHARDSON, MIKE	2 9	
5-7	71.4%	10-12 83.3%	PHILLIPS, DAVID, 1 & Bonus missed 1st	2 3:53				
				2 3:48		Sub In: PULLIAM, BRAD Out: TALBERT, JOSH		
				2 3:48		Sub In: BERRY, SEAN Out: WAGNER, BUDDY		
1-4	25.0%	8-21 38.0%	7 ft Left Side Jump shot by GARNER, JASON	2 3:48	*28-26			
			Foul on KELSAY, JASON	2 2:56				
				2 2:35	28-28*	4 ft Lane Jump shot by RICHARDSON, MIKE	3-5 60.0% 12-33 36.3%	
2-5	40.0%	9-23 39.1%	6 ft Lane Jump shot by GARNER, JASON	2 1:59	*30-28			
			Assist by PHILLIPS, DAVID					
				2 1:43		Foul on BERRY, SEAN	2 10	
				2 1:43		Sub In: TALBERT, JOSH Out: PULLIAM, BRAD		
0-1	00.0%	10-13 76.9%	GARNER, JASON, 1 & Bonus missed 1st	2 1:29	30-30*	4 ft Lane Bank by RICHARDSON, MIKE	4-6 66.6% 13-35 37.1%	
				2 1:11				
			Foul on GARNER, JASON	2 1:11				
			Sub In: RAMSEY, RICHARD Out: KELSAY, JASON	2 1:11	30-32*	18 ft Circle Jump shot by RICHARDSON, MIKE	5-7 71.4% 14-36 38.8%	
				2 1:11				
			Foul on OWENS, TRENT	2 0:29				
0-1	Tot-1	D-1 Tot-20	Rebound by PHILLIPS, DAVID	2 0:00		3 pt 20 ft Circle Jump shot by RICHARDSON, MIKE, missed	5-8 62.5% 14-37 37.8%	

VISITORS (Last Name, First)

NO.	SCOTT COUNTY	Tot FG		3-POINT		FT	FTA	Rebounds			PF	TP	A	TO	BLK	S	TIME
		FG	FGA	FG	FGA			OFF	DEF	TOT							
00	TALBERT, JOSH	1	6	0	0	1	2	4	1	5	2	3	1	1	0	0	11:08
20	WOOD, JEREMY	1	7	1	6	0	0	1	1	2	0	3	2	0	0	0	14:35
34	BERRY, SEAN	0	0	0	0	0	0	0	5	5	2	0	0	0	0	1	10:22
24	JOHNSON, TONY	3	6	1	1	0	0	1	2	3	2	7	0	2	0	2	8:46
10	RICHARDSON, MIKE	5	8	0	1	0	0	0	2	2	2	10	1	2	0	0	12:57
32	WAGNER, BUDDY	2	2	0	0	0	0	0	0	0	0	4	0	0	0	0	5:38
44	PULLIAM, BRAD	0	2	0	0	0	0	2	1	3	1	0	1	0	0	0	4:52
14	PENN, BILLY RAY	2	4	1	1	0	0	1	0	1	0	5	0	1	0	0	7:59
05	HUBBARD, RONNIE	0	1	0	0	0	0	1	0	1	1	0	0	0	0	1	2:18
22	CENTERS, JASON	0	1	0	0	0	0	0	0	0	0	0	0	0	0	0	1:05
TEAM REBOUNDS (INCLUDED IN TOTALS)																	
TOTALS		14	37	3	9	1	2	10	12	22	10	32	5	6	0	4	80

TOTAL FG 1st HALF 7/20 35.0% 2nd HALF 7/17 41.2% GAME 14/37 37.8% DEADBALL

3-POINT FG 1st HALF 1/5 20.0% 2nd HALF 2/4 50.0% GAME 3/9 33.3% REBOUNDS 1

FREE THROWS 1st HALF 1/2 50.0% 2nd HALF 0/0 0.0% GAME 1/2 50.0%

HOME (Last Name, First)

NO.	WAYNE COUNTY	Tot FG		3-POINT		FT	FTA	Rebounds			PF	TP	A	TO	BLK	S	TIME
		FG	FGA	FG	FGA			OFF	DEF	TOT							
21	PHILLIPS, DAVID	2	6	1	2	5	7	3	6	9	0	10	2	2	0	0	16:00
32	GARNER, JASON	2	6	0	0	0	1	1	3	4	2	4	0	1	0	0	16:00
33	KELSAY, JASON	1	1	0	0	0	0	1	2	3	1	2	0	1	1	0	14:49
11	SHEARER, WILLIAM	2	6	0	3	4	4	1	1	2	0	8	2	4	0	0	16:00
23	RAMSEY, RICHARD	2	6	1	4	1	1	1	1	2	1	6	1	0	1	0	12:16
24	OWENS, TRENT	0	1	0	1	0	0	0	0	0	1	0	0	0	0	0	4:55
TEAM REBOUNDS (INCLUDED IN TOTALS)																	
TOTALS		9	26	2	10	10	13	7	13	20	5	30	5	8	2	0	80

TOTAL FG 1st HALF 5/14 35.7% 2nd HALF 4/12 33.3% GAME 9/26 34.6% DEADBALL

3-POINT FG 1st HALF 2/6 33.3% 2nd HALF 0/4 0.0% GAME 2/10 20.0% REBOUNDS 1

FREE THROWS 1st HALF 6/7 85.7% 2nd HALF 4/6 66.7% GAME 10/13 76.9%

OFFICIALS: Barry Barnes, Gerry Hilpp, Mike Ashurst-A
 Technicals: None

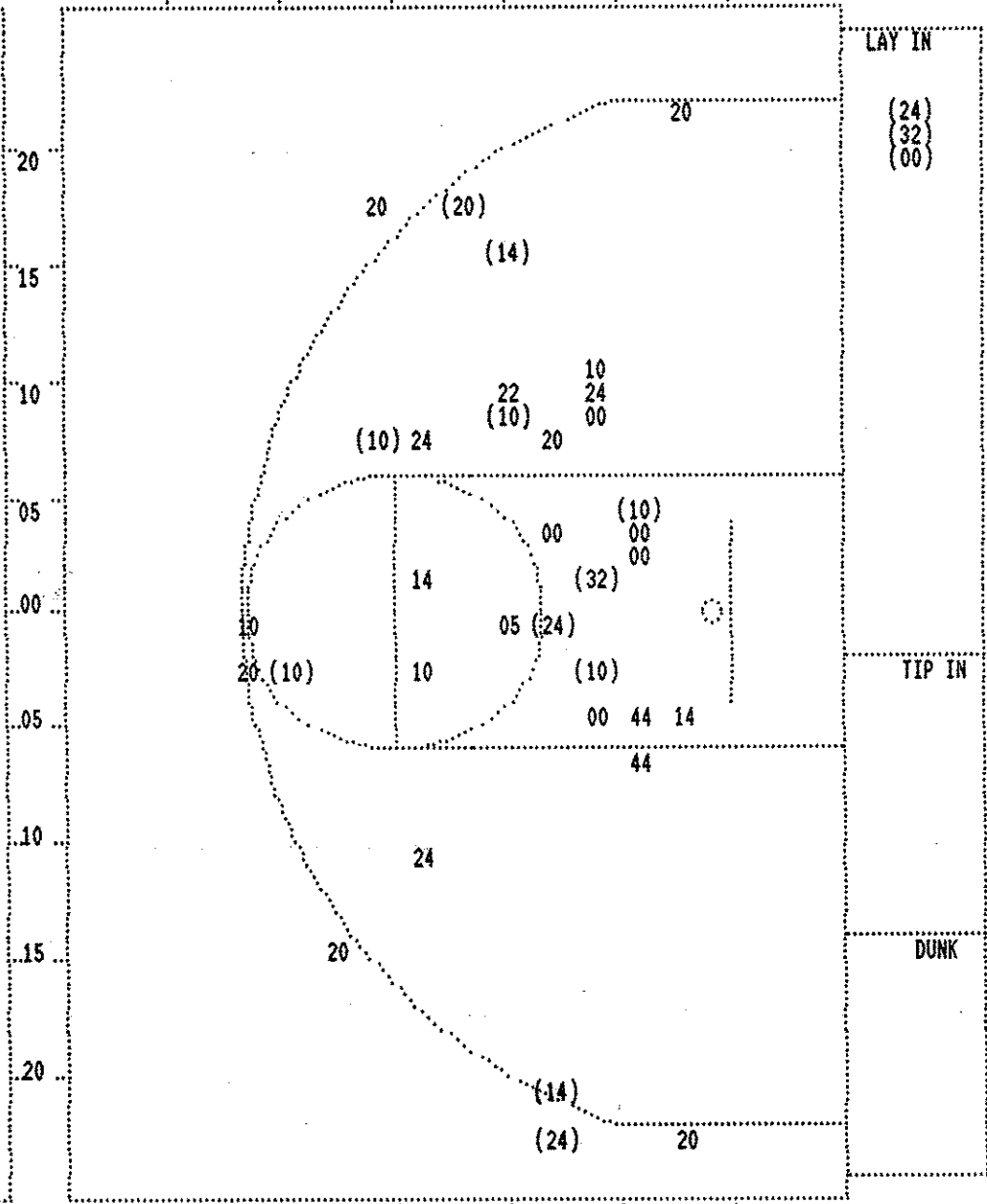
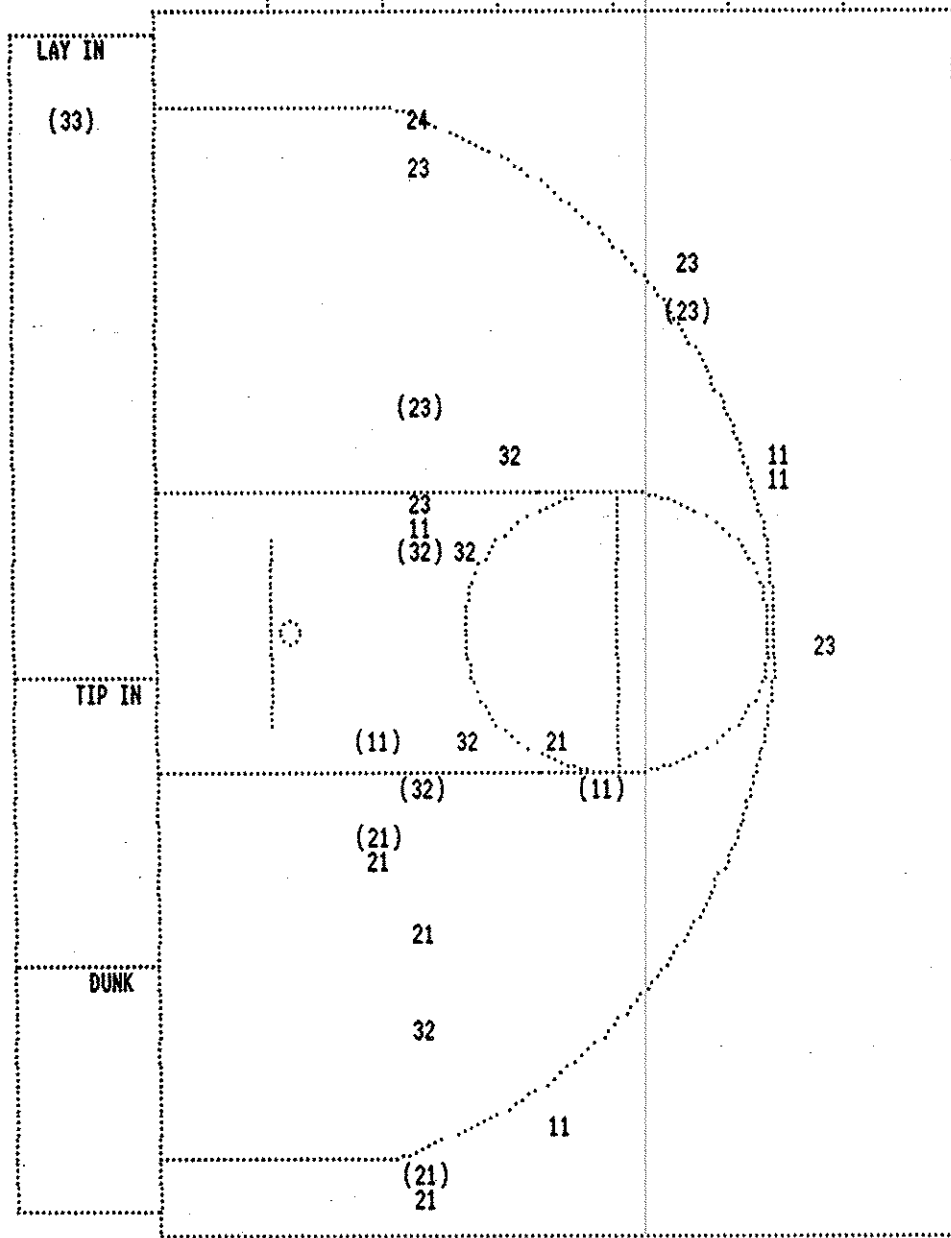
SCORE BY PERIODS

SCOTT COUNTY	16	16	=	32
WAYNE COUNTY	18	12	=	30

Attendance:

COMMENTS: POINTS OFF TURNOVERS

SCOTT COUNTY	8	WAYNE COUNTY	4	
SECOND CHANCE POINTS		7	WAYNE COUNTY	8



WAYNE COUNTY			
Player		Player	Player
21 - PHILLIPS, JA	2 / 6 33.3%	24 - OWENS, TRE	0 / 1 0.0%
32 - GARNER, JA	2 / 6 33.3%		
33 - KELSAY, JA	1 / 1 100.0%		
11 - SHEARER, WI	2 / 6 33.3%		
23 - RANSEY, RI	2 / 6 33.3%		
Layups	1-9 Ft	10-15 Ft	Over 15 Ft 3 Pointers Total
1 / 1	4 / 9	2 / 5	0 / 1 2 / 10 9 / 26
100.0%	44.4%	40.0%	0.0% 20.0% 34.6%

SCOTT COUNTY			
Player		Player	Player
00 - TALBERT, J	1 / 6 16.6%	14 - PENN, BILL	2 / 4 50.0%
20 - WOOD, JERE	1 / 7 14.2%	22 - CENTERS, J	0 / 1 0.0%
24 - JOHNSON, I	3 / 6 50.0%	32 - WAGNER, BU	2 / 2 100.0%
10 - RICHARDSON	5 / 8 62.5%	44 - PULLIAM, B	0 / 2 0.0%
05 - HUBBARD, R	0 / 1 0.0%		
Layups	1-9 Ft	10-15 Ft	Over 15 Ft 3 Pointers Total
3 / 3	4 / 12	1 / 9	3 / 4 3 / 9 14 / 37
100.0%	33.3%	11.1%	75.0% 33.3% 37.8%

SCOTT COUNTY "CARDINALS" vs WAYNE COUNTY "CARDINALS"
 2nd Half Play by Play

PAGE : 1

Tip off at 1:00 P.M on 03/15/95 at BOY'S SWEET 16, LEXINGTON
 Produced by the KHSAA SWEET 16 Stat Crew with FINAL III
 Final III is a product of STONE CONSULTING SERVICE (606)273-3941

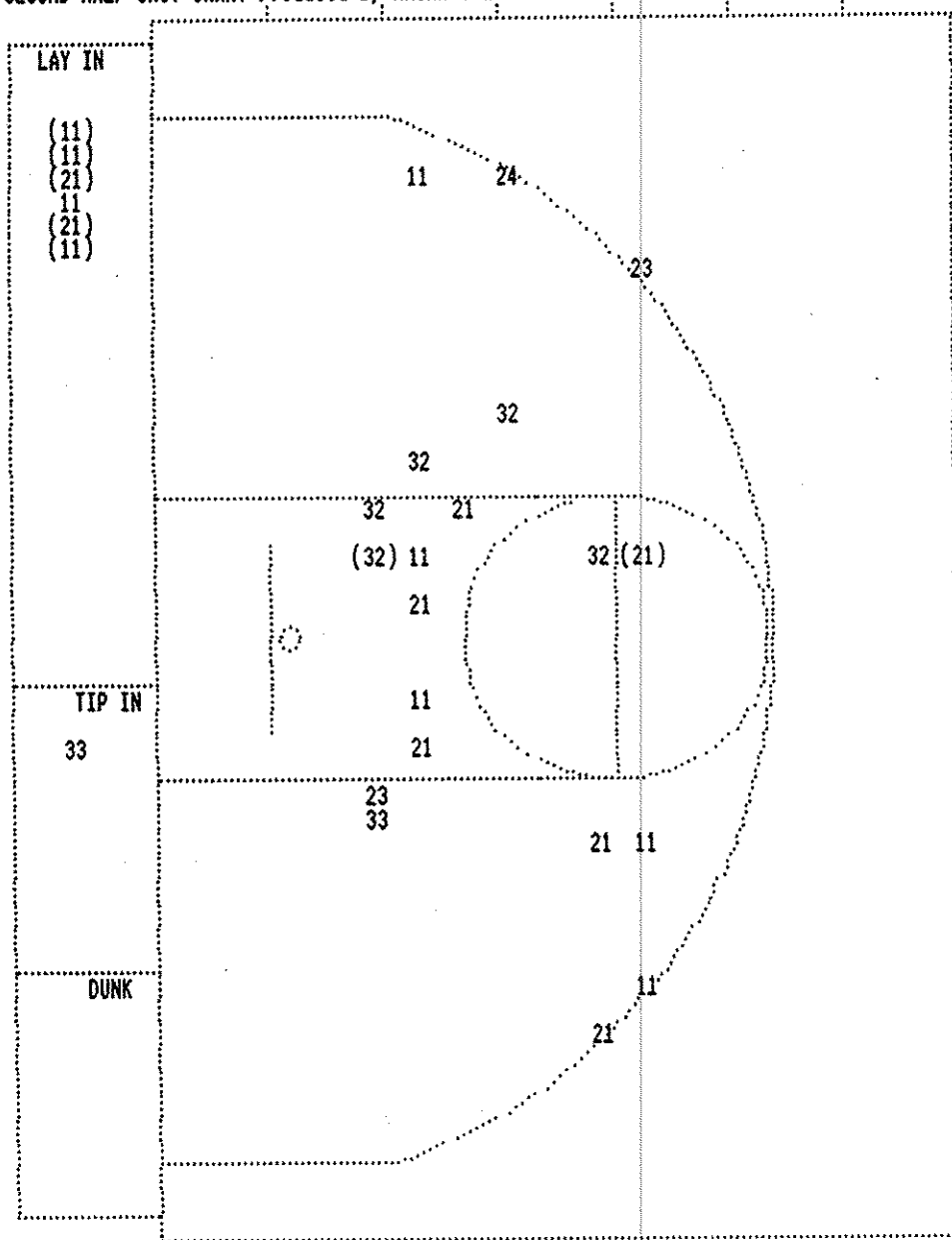
Player	Team	WAYNE COUNTY	Time	Score	SCOTT COUNTY	Player	Team	
PHILLIPS, DAVID, GARNER, JASON, KELSAY, JASON, SHEARER, WILLIAM, RAMSEY, RICHARD			TALBERT, JOSH, WOOD, JEREMY, BERRY, SEAN, JOHNSON, TONY, RICHARDSON, MIKE					
5-6 83.3% 11-15 73.3% SHEARER, WILLIAM, 2 Free Throws missed 1st made 2nd			3 7:44	*31-32	Ball to CARDINALS	3	1	
2	1	Foul on RAMSEY, RICHARD	3 7:18	31-34*	8 ft Lane Driving by RICHARDSON, MIKE	6-9	66.6% 15-38 39.4%	
REB: 21 A: 5 BLK: 2 TO: 9 PF: 1			3 7:18	31-35*	RICHARDSON, MIKE, 1 Free Throw made	1-1	100% 2-3 66.6%	
S: 1 FT: 11-15 73.3% FG: 9-28 32.1%			3 7:18	31-37*	Driving Layup by RICHARDSON, MIKE	7-10	70.0% 16-40 40.0%	
No. 1 WAYNE COUNTY			3 6:20					
REB: 24 A: 5 BLK: 1 TO: 8 PF: 1			T I M E - O U T				S: 5 FT: 2-3 66.6% FG: 16-40 40.0%	
S: 1 FT: 11-15 73.3% FG: 9-28 32.1%			3 5:59	*33-37				
3-7	42.8%	10-29 34.4%	3 4:37	33-39*	Layup Off Fast Break by WOOD, JEREMY	2-8	25.0% 17-43 39.5%	
Layup Off Fast Break by SHEARER, WILLIAM			3 4:23		Sub In: WAGNER, BUDDY Out: BERRY, SEAN			
2	2	Foul on KELSAY, JASON	3 4:07					
REB: 25 A: 5 BLK: 2 TO: 13 PF: 2			3 4:00	33-41*	Driving Layup by TALBERT, JOSH	2-8	25.0% 18-46 39.1%	
S: 2 FT: 11-15 73.3% FG: 10-32 31.2%			3 3:41	33-43*	Layup Off Fast Break by JOHNSON, TONY	4-8	50.0% 19-47 40.4%	
No. 2 WAYNE COUNTY			3 3:30		Assist by TALBERT, JOSH	2	7	
REB: 28 A: 7 BLK: 1 TO: 9 PF: 2			3 3:30		Foul on TALBERT, JOSH	3	2	
S: 2 FT: 11-15 73.3% FG: 10-32 31.2%			T I M E - O U T				S: 8 FT: 2-3 66.6% FG: 19-48 39.5%	
4-8	50.0%	11-33 33.3%	3 3:21	*35-43				
Driving Layup by SHEARER, WILLIAM			3 2:59		Foul on RICHARDSON, MIKE	3	3	
3	3	Foul on KELSAY, JASON	3 2:29					
REB: 30 A: 7 BLK: 2 TO: 11 PF: 5			3 2:29		Sub In: JOHNSON, TONY Out: PENN, BILLY RAY	4	4	
S: 3 FT: 13-17 76.4% FG: 12-36 33.3%			3 2:15		Foul on RICHARDSON, MIKE			
No. 1 SCOTT COUNTY			3 2:15		Sub In: PENN, BILLY RAY Out: RICHARDSON, MIKE	1	5	
REB: 30 A: 7 BLK: 2 TO: 11 PF: 5			3 2:05		Foul on WOOD, JEREMY			
S: 3 FT: 13-17 76.4% FG: 12-36 33.3%			3 2:05	*37-43				
7-9	77.7%	13-17 76.4%	3 2:05		Sub In: HUBBARD, RONNIE Out: JOHNSON, TONY			
PHILLIPS, DAVID, 2 Free Throws made both			3 1:50	*39-43				
3-9	33.3%	12-36 33.3%	T I M E - O U T					
Layup Off Fast Break by PHILLIPS, DAVID			3 1:48		Foul on HUBBARD, RONNIE	2	6	
REB: 27 A: 5 BLK: 3 TO: 13 PF: 3			3 1:44		Sub In: JOHNSON, TONY Out: HUBBARD, RONNIE			
S: 3 FT: 13-17 76.4% FG: 12-36 33.3%			3 1:40					
No. 1 SCOTT COUNTY			3 1:16					
REB: 30 A: 7 BLK: 2 TO: 11 PF: 5			3 1:07	39-45*	Driving Layup by WAGNER, BUDDY	3-3	100% 20-51 39.2%	
S: 3 FT: 13-17 76.4% FG: 12-36 33.3%			3 1:07		Assist by JOHNSON, TONY	2	8	
4	4	Foul on KELSAY, JASON	3 0:22	39-47*	18 ft Right Angle Jump shot by PENN, BILLY RAY	3-5	60.0% 21-52 40.3%	
1	5	Foul on SHEARER, WILLIAM						

Player	Team	WAYNE COUNTY	Time	Score	SCOTT COUNTY	Player	Team
SHEARER, WILLIAM, PHILLIPS, DAVID		OWENS, TRENT, GARNER, JASON, KELSAY, JASON			JOHNSON, TONY, PENN, BILLY RAY, WOOD, JEREMY, WAGNER, BUDDY, PULLIAM, BRAD		
8-11	72.7%	14-19 73.6%	PHILLIPS, DAVID, 2 Free Throws missed 1st made 2nd	4 7:32 *40-47	Foul on PULLIAM, BRAD	2	7
2-3	66.6%	16-21 76.1%	GARNER, JASON, 1 & Bonus made both	4 6:54	Foul on PULLIAM, BRAD	3	8
3	6		Foul on GARNER, JASON	4 6:54 *42-47	Sub In: TALBERT, JOSH Out: PULLIAM, BRAD		
1	7		Foul on PHILLIPS, DAVID	4 6:54	Sub In: BERRY, SEAN Out: WAGNER, BUDDY		
4	8		Foul on GARNER, JASON	4 5:26	Sub In: RICHARDSON, MIKE Out: PENN, BILLY RAY		
5-7	71.4%	16-22 72.7%	SHEARER, WILLIAM, 1 & Bonus missed 1st	4 5:26	WOOD, JEREMY, 1 Free Throw missed	0-1	00.0% 2-4 50.0%
3-4	75.0%	17-23 73.9%	GARNER, JASON, 1 Free Throw made	4 5:01	42-49* TALBERT, JOSH, 1 & Bonus made both	3-4	75.0% 4-6 66.6%
3-5	60.0%	17-24 70.8%	GARNER, JASON, 1 Free Throw missed	4 5:01	Foul on JOHNSON, TONY	4	9
4-11	36.3%	13-47 27.6%	Driving Layup by PHILLIPS, DAVID	4 4:29	Foul on JOHNSON, TONY	5	10
2	9		Foul on SHEARER, WILLIAM	4 4:05	Sub In: PENN, BILLY RAY Out: JOHNSON, TONY		
5-13	38.4%	14-49 28.5%	15 ft Lane Turnaround by PHILLIPS, DAVID	4 4:04	Sub In: WAGNER, BUDDY Out: BERRY, SEAN		
				4 4:04	Sub In: RICHARDSON, MIKE, 1 & Bonus missed 1st	1-2	50.0% 4-7 57.1%
				4 3:57 *43-49	Driving Layup by TALBERT, JOSH	3-11	27.2% 22-60 36.6%
				4 3:57	Assist by RICHARDSON, MIKE	2	9
				4 3:37 *45-49			
				4 3:32			
				4 3:28			
				4 2:22 *47-49			
				4 1:56 47-51*			
				4 1:50			
				4 1:41 *49-51			
				4 1:40	Foul on PENN, BILLY RAY	1	11
				4 1:40			
				4 1:35 *51-51			
				4 1:26	Sub In: BERRY, SEAN Out: WAGNER, BUDDY		
				4 1:26			
				4 1:26	51-53* WOOD, JEREMY, 1 & Bonus made both	2-3	66.6% 6-9 66.6%
				4 1:05	51-55* RICHARDSON, MIKE, 1 & Bonus made both	3-4	75.0% 8-11 72.7%
				4 1:05	Foul on WOOD, JEREMY	2	12
				4 1:02 *53-55			
				4 0:35			
				4 0:35 53-56* PENN, BILLY RAY, 1 & Bonus made 1st missed 2nd	1-2	50.0% 9-13 69.2%	
				4 0:28			
				4 0:28	WOOD, JEREMY, 1 & Bonus missed 1st	2-4	50.0% 9-14 64.2%
				4 0:26 53-58* 4 ft Lane Follow by BERRY, SEAN	1-2	50.0% 23-62 37.0%	
				4 0:15			
				4 0:15			
				4 0:15 53-60* WOOD, JEREMY, 1 & Bonus made both	4-6	66.6% 11-16 68.7%	

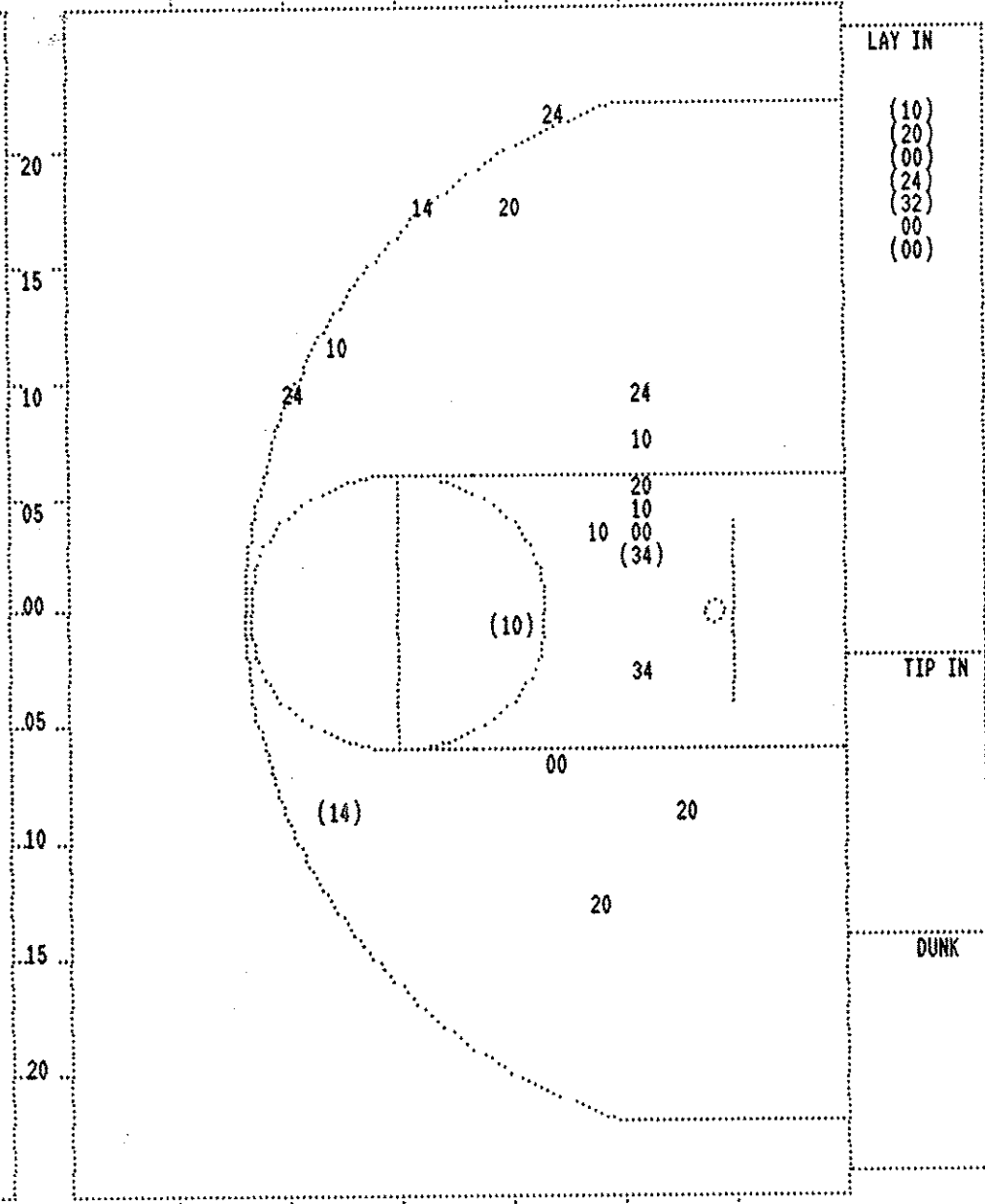
REB: 36 A: 5 BLK: 3 TO: 15 PF: 9
S: 6 FT: 17-24 70.8% FG: 14-49 28.5%

No. 3 WAYNE COUNTY TIME - O U T
REB: 43 A: 9 BLK: 2 TO: 16 PF: 10
S: 9 FT: 4-7 57.1% FG: 22-60 36.6%

SECOND HALF SHOT CHART Produced by KHSAA SWEET 16 Stat Crew with FINAL III - a Copyrighted Product of STONE CONSULTING (606)273-3941™



WAYNE COUNTY					SCOTT COUNTY						
Player			Player		Player		Player				
21 - PHILLIPS	3/8	37.5%	24 - OWENS, TRE	0/1	0.0%	00 - TALBERT, J	2/5	40.0%	14 - PENN, BILL	1/2	50.0%
32 - GARNER, JA	1/5	20.0%				20 - WOOD, JERE	1/5	20.0%	32 - WAGNER, BU	1/1	100.0%
33 - KELSAY, JA	0/2	0.0%				34 - BERRY, SEA	1/2	50.0%			
11 - SHEARER, WI	3/9	33.3%				24 - JOHNSON, T	1/4	25.0%			
23 - RAMSEY, RI	0/2	0.0%				10 - RICHARDSON	2/6	33.3%			
Layups	1-9 Ft	10-15 Ft	Over 15 Ft	3 Pointers	Total	Layups	1-9 Ft	10-15 Ft	Over 15 Ft	3 Pointers	Total
5/7	1/10	1/4	0/1	0/5	7/27	6/7	2/10	0/2	1/2	0/4	9/25
71.4%	10.0%	25.0%	0.0%	0.0%	25.9%	85.7%	20.0%	0.0%	50.0%	0.0%	36.0%



WAYNE COUNTY					SCOTT COUNTY						
Player			Player		Player		Player				
21 - PHILLIPS	3/8	37.5%	24 - OWENS, TRE	0/1	0.0%	00 - TALBERT, J	2/5	40.0%	14 - PENN, BILL	1/2	50.0%
32 - GARNER, JA	1/5	20.0%				20 - WOOD, JERE	1/5	20.0%	32 - WAGNER, BU	1/1	100.0%
33 - KELSAY, JA	0/2	0.0%				34 - BERRY, SEA	1/2	50.0%			
11 - SHEARER, WI	3/9	33.3%				24 - JOHNSON, T	1/4	25.0%			
23 - RAMSEY, RI	0/2	0.0%				10 - RICHARDSON	2/6	33.3%			
Layups	1-9 Ft	10-15 Ft	Over 15 Ft	3 Pointers	Total	Layups	1-9 Ft	10-15 Ft	Over 15 Ft	3 Pointers	Total
5/7	1/10	1/4	0/1	0/5	7/27	6/7	2/10	0/2	1/2	0/4	9/25
71.4%	10.0%	25.0%	0.0%	0.0%	25.9%	85.7%	20.0%	0.0%	50.0%	0.0%	36.0%